

## PLANETAIR KEY BENEFITS

- **WORLD COVERAGE**

Aerial photography rich in geographic information

- **UP-TO-DATE DATA**

Reflecting local changes

- **ENHANCED QUALITY**

Natural color and seamless aerial views

- **RESOLUTIONS DOWN TO 10 CM**

Perfect for a working scale down to 1:500

- **OUR EXPERIENCED TEAMS AT YOUR SERVICE**

Constant technical support to better serve our customers

## PLANETAIR VERY HIGH RESOLUTION AERIAL PHOTOGRAPHY

You're looking for **very high resolution aerial photography**?

Use **PlanetAIR solution**, the comprehensive range of up-to-date aerial photography of France and any place across the world, that meets all your projects' demands.

### YOUR READY-TO-USE CARTOGRAPHIC SOLUTION

In the communication and media sectors, **PlanetAIR** range of aerial photography is perfect to fit your needs, should it be for **broadcasting, documentary films** or **print/web illustration**.

With their very high resolution, **PlanetAIR** aerial photography is the perfect geographic information resource for consumer and professional **visualization solutions**.

### KEY ADVANTAGES FOR USERS

- » **Free samples, with no commitment**
- » **Delivery of the area of interest of your choice**
- » **On-demand resolution, projection and format**
- » **Ready-to-use files**
- » **Rapid delivery, down to 48hours**

With **PlanetAIR** range of very high resolution aerial photography, enrich your projects and applications across a wide variety of industries:



## Defense

Simulators and flight training devices, mission preparation systems, visualization and simulation software



## GIS

Agriculture (crop monitoring), telecom (wireless network planning), real estate



## Energy

Projects in oil, gas & mining, wind power feasibility studies



## Space & Aeronautics

Simulation and flight planning solutions for civil aircrafts and helicopters, real-time aircraft navigation applications



## Media

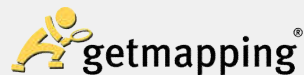
Graphics solutions for TV channels and weather institutes, broadcasting, press, publishing



## Communication

Pictures for media plans, billboard displays, leaflets, advertising, web

## MAIN DATA PARTNERS



## CORPORATE REFERENCES

- Agenium (STK, Luciad)
- BETC
- BeWapp
- Conservatoire du Littoral
- Credit Agricole Bank
- EURO RSCG
- Humi Agency
- Ijin Prod
- Publicis
- Quadrilatère
- RSA Cosmos
- Urban planning services in France
- Vulcania
- Xample (Air Navigation Pro)

- » Up-to-date aerial photography
- » AOI on demand
- » Ready-to-use files



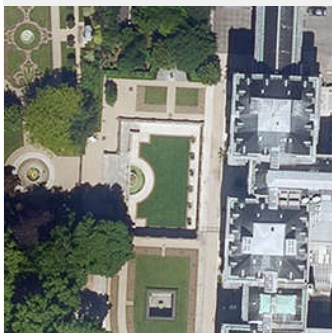
Nîmes, France



Munich, Germany



Narbonne-Plage, France



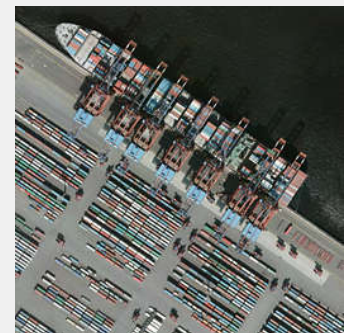
Luxembourg Garden, France



Southwick, England



Port-la-Nouvelle, France



Hamburg, Germany